

## CSL

### Client Server Link – Streamlining Heterogeneous NonStop Integration



*As the competitive and economic climate gets tougher, it is no secret that the demands on IT get more intense. It is for these reasons that initiatives like service oriented architectures (SOA) and application modernization get critical – an essential way to wring the most business value from existing investments. Now, with Client Server Link (CSL), organizations can easily and cost-effectively weave NonStop platforms into their SOA and application modernization initiatives, so they can fully leverage these investments while significantly boosting the business value of the IT infrastructure.*

#### Purpose

CSL enables organizations to connect HPE NonStop applications to a broad range of external programming and runtime environments. With CSL, organizations can integrate HPE NonStop applications into their SOA, with a minimum of time and effort. CSL hides all low level communication details and allows application development to fully concentrate on the business logic.

#### Features

- **Broad integration support.** CSL provides integration with any application based on Java, Microsoft .NET, Delphi, Visual Basic or native C/C++, running on Windows, UNIX (Solaris, AIX, and HP/UX) or any Java enabled platform.
- **JEE support.** Transactional HPE NonStop applications can be integrated with any JEE-compliant application or integration server – including IBM WebSphere, Oracle WebLogic, Apache Geronimo, and JBoss.
- **ESB adapters.** CSL includes adapters for direct connection to Enterprise Service Bus and application integration solutions, such as SAP NetWeaver.
- **Web Service enablement.** Using CSL SOAP and CSL REST, existing Pathway servers can be easily exposed as Web Services without writing a single line of code. Highly scalable new web services can be implemented directly from WSDL. Remote Web Services can be easily accessed from NonStop applications, even from legacy COBOL code.
- **RSC replacement.** Existing Remote Server Call applications run with CSL without modification.
- **Eclipse plug-in.** CSL Studio enables developers to visually design, generate and deploy service-oriented interface components.
- **High performance.** CSL leverages NonStop fundamentals for scalability, reliability, and throughput, enabling cross-platforms high volume transaction processing. With the wide range of adapters using CSL's high-performance connection protocol, service enablement is not limited to CPU-intensive SOAP/XML processing.
- **SSL support.** With SSL/TLS embedded, CSL provides secure transmission of confidential data.
- **Minimal System Requirements.** CSL does not require Java or OSS on the HPE NonStop server.

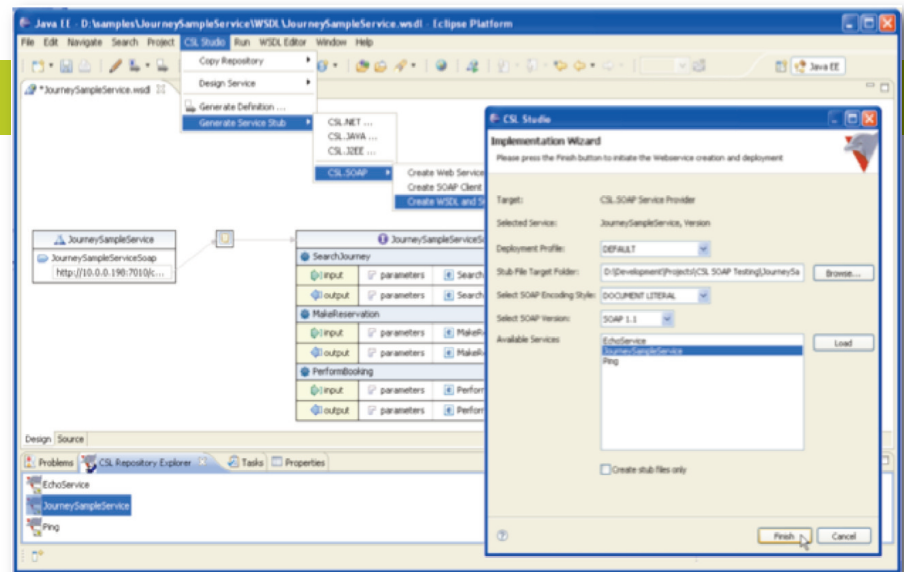
#### Key Features

- Pathway access from remote platforms
- Remote service access from NonStop applications
- JEE and ESB adapters
- Web service client and server support
- Eclipse-based interface creation, generation and deployment
- Integrated SSL/TLS security
- RSC replacement

## Benefits

- **Fast and Easy Service-Enablement.** CSL significantly reduces the time it takes to integrate NonStop applications with SOA environments.
- **Application Modernization.** CSL provides an excellent infrastructure for modernizing existing NonStop applications.
- **Simplified infrastructures.** CSL represents a single product that integrates to heterogeneous IT infrastructures with minimal footprint on your HPE NonStop server, reducing complexity, management effort, and costs.
- **Integrated security.** With CSL's embedded SSL/TLS session encryption, regulatory compliance is achieved without a separate encryption product. Existing RSC applications can be instantly secured.
- **Full leverage of NonStop investments.** CSL enables organizations to integrate NonStop with a diverse range of platforms, systems and integration solutions, maximizing the utility of NonStop investments.

# CSL



comforte 21 GmbH, Germany  
phone +49 (0) 611 93199-00  
sales@comforte.com

comforte, Inc., USA  
phone +1-303 256 6257  
ussales@comforte.com

comforte Asia Pte. Ltd., Singapore  
phone +65 6818 9725  
asiasales@comforte.com

comforte Pty Ltd, Australia  
phone +61 2 8197 0272  
aussales@comforte.com

[www.comforte.com](http://www.comforte.com)



For distribution partners in your region visit comforte's homepage  
[www.comforte.com](http://www.comforte.com)

The CSL Studio Eclipse plug-in enables visual design and generation of service-oriented NonStop application components.